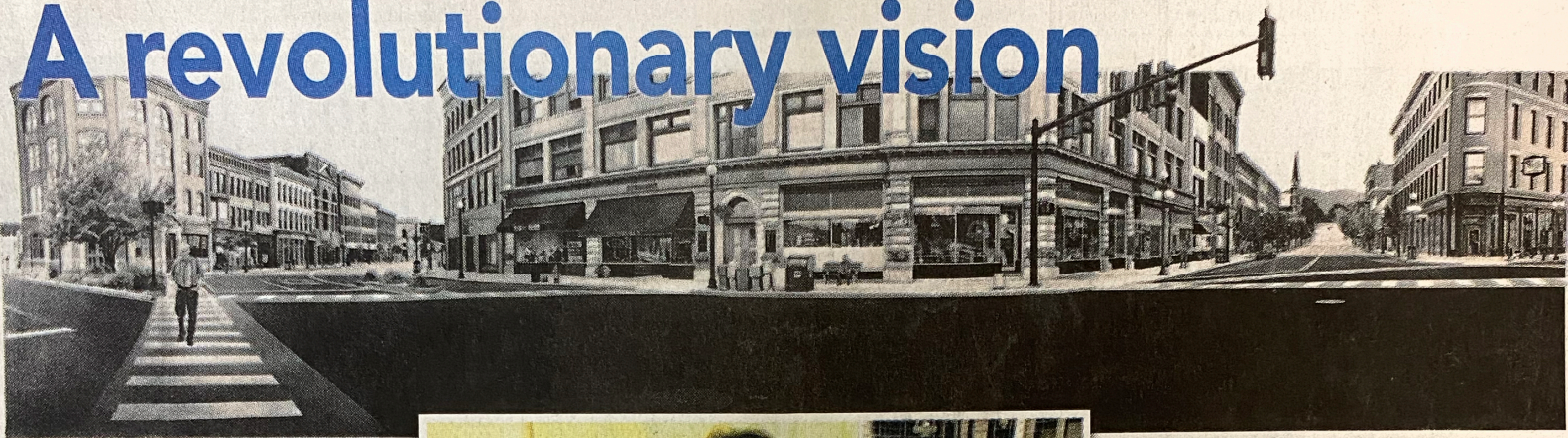


# A revolutionary vision



PROVIDED PHOTO

William Ramage's "Rutland: A Post Piero Ideal City"

## Ramage art

By VICTORIA CRAIN  
ARTS CORRESPONDENT

**R**utland artist Bill Ramage hopes to incite revolution with his new drawing-sculpture. It is 43 by 11.5 feet and its subject is Rutland's Center Street/Merchants Row intersection in 2012, early one July morning. The Castleton Downtown Gallery is exhibiting the drawing-sculpture in the former Sunapee Bank Building in Rutland.

According to Ramage, though, that is not what this installation is about and maybe it isn't even art. In his book "Seeing," Ramage wrote, "I would go so far as to say I mostly use art because it is my first language and the most suitable to my designated task."

And what is the task? The task Ramage set for himself in this piece and most of his work for the last 30 years has been "to challenge the very limited way we visually interpret and image the life around us."

### Linear perspective

The new drawing-sculpture is titled "Rutland: A Post Piero Ideal City." The title refers to a 1470 painting by Piero Della Francesca called "Ideal City." That painting was a city scene too, designed and painted to demonstrate linear perspective, which at the time was a new mathematical visual system enabling an artist to portray three dimensions on a two-dimensional surface such as a painting or drawing. In

See Ramage, Page B7



PROVIDED PHOTO

Rutland artist Bill Ramage places part of his "Rutland: A Post Piero Ideal City" which extends to 43 by 11.5 feet.

# invite

Thursday, January 8, 2015 The Arts and Entertainment Guide of the Rutland Herald

## Ramage

Continued from Page B1

century the new linear perspective was a miracle: an explosion of new thought.

Now, linear perspective, with its vanishing point on the horizon, is taken for granted. We think it's the only way to see. It has become the way we perceive objects in space and time.

But, asks Ramage: "What if we could perceive space

and time differently? What if, in our rapidly evolving world, it becomes necessary to find a new way to perceive what we see? What happens when we open new paths to think along?"

### Centripetal perspective

Ramage's new Rutland drawing-sculpture is his demonstration of centripetal perspective: a system that he proposes provides a more vital perceptual system. He says: "Centripetal

means to move toward the center and centripetal perspective moves the center of every perception into the mind of the observer, where seeing — a living thought experience — really ought to be."

What is he talking about? What does that mean? He's talking about a completely new way to perceive the space around us, and the objects we see in it. He's talking about changing the world again, just as Renaissance artists did

■ **Castleton Downtown**  
Castleton Downtown presents Bill Ramage's pencil drawing-sculpture "Rutland: A Post Piero Ideal City," through February, at 104 Merchants Row (former Sunapee Bank Building), Rutland. Viewing is by appointment (groups up to 10; noon Wednesdays, 5:30 p.m. Thursdays, and 2 p.m. Saturdays and Sundays); email [william.ramage@castleton.edu](mailto:william.ramage@castleton.edu).

600 years ago. Really?  
That's a lot to take in

without an example. So to consider this perplexing new proposal, the public is invited to come and experience "Rutland: A Post Piero Ideal City."

Presented by the Castleton Downtown Gallery, the sculpture-drawing is installed in the former Sunapee Bank building in downtown Rutland. It is erected as a cylindrical configuration, so the viewer can actually enter the piece. The space is not large enough to hold a public opening, so

Ramage invites people to see the piece in groups of up to 10 people by appointment.

Ramage will make a brief presentation and answer questions for people who see the piece at the following scheduled times: noon Wednesdays, 5:30 p.m. Thursdays, and 2 p.m. Saturdays and Sundays.

If you're curious about this Ramage revolution, you can make an appointment by e-mailing the artist at [william.ramage@castleton.edu](mailto:william.ramage@castleton.edu).