

shopping | eat/drink | nightlife | music | calendar | movies | arts | profiles

Jan. 15, 2009

B scene

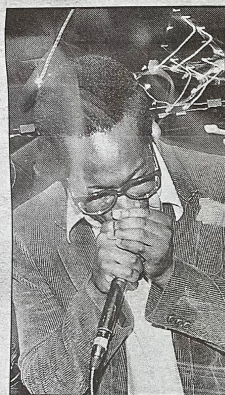
www.bscevent.com

INSIDE

■ STRENGTH IN NUMBERS
■ DRAWINGS @ FLYNNDOG

Hip to the HOP

CONTENTS ••• JANUARY 15, 2009



Dail, on the mic with Strength in Numbers, at Nectars.

ON THE COVER

Lois, Alexis and David strike a pose between sessions at the fourth annual Urban Reach Dance Convention. The two-day event featured more than 100 aspiring hip-hop dancers.



Artist Bill Ramage with his daughter Whitney at the opening reception his exhibit, which will be up until Feb. 28, at Flynndog Gallery, Flynn Ave., Burlington. Photos by BEN SARLE, for BScene

EAT/DRINK

Warm up with hot drinks: 5

NIGHTLIFE

Strength in Numbers at Nectar's: 9-13

PEOPLE

Urban Reach Dance Convention: 14-17

ARTS

Drawings by Bill Ramage at Flynndog Gallery: 20-22

PROFILE

Ellen Dorsch of Creative Women: 25

MOVIES

Reviews, showtimes: 26-28

CALENDAR

Club listings: 4

Best Bets: 18-19

Day-by-day event listings: 29-32

20 / BScene • Thursday, January 15, 2009 www.bscevent.com

Barts/culture scene

More than meets the eye at Drawings by Bill Ramage

Featured artist Bill Ramage with his daughter Whitney at the art exhibit opening reception for Drawings by Bill Ramage at the Flynndog Gallery in Burlington. The exhibit, which uses different mediums and plays with perception and linear artistic thought, will be on display until Feb. 28.

Jonas Gaudin of South Burlington

Photos by BEN SARLE, for BScene

One of the drawings on the floor

CHOP HOLLISTER every Wednesday night

T BONES Restaurant & Bar Steak • Seafood • Patis

OPEN HOUSE NIGHT EVENT SATURDAY AT 8PM Show Off Your Talent!

SUNDAY BRUNCH BUFFET 10am-2pm

Clontal Saloon, owner of Bone Space Cafe, helps organize for the opening reception.

Nathan Brady-Cook and Jessica McKinney, both of Ramage

21 / BScene • Thursday, January 15, 2009 www.bscevent.com

arts/culture B scene

In the eye of the beholder at Drawings by Bill Ramage

"The Centipede Gates of Bliss"

One of the pieces on display at Drawings by Bill Ramage.

Photos by BEN SARLE, for BScene

"The David Bates Quarter, Five Easy Measurements"

NO HAIR LEFT BEHIND

BRAZILIAN WAX SPECIALIST 865-ENVY (3689)

180 College St., Burlington VT 05405 Hours: M 11-6 T 11-10 F 9-6 Sat 9-4

22 / BScene • Thursday, January 15, 2009 www.bscevent.com

Barts/culture scene

A different perspective at Flynndog Gallery



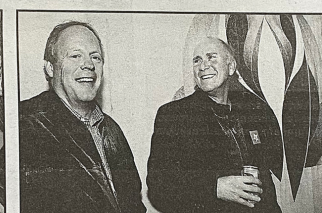
The art exhibit opening reception for Drawings by Bill Ramage was held at the Outer Space Cafe. The pieces, which use different mediums to play with perception, will be on exhibit through Feb. 28 at the Flynndog Gallery in Burlington.



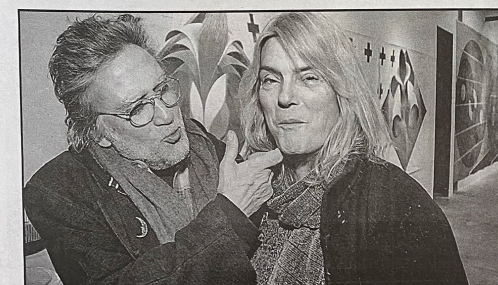
Shelley Warren-Hagan of Richmond, Michael Stuart of Burlington and Jacqueline Stuart, also of Burlington



Austin and Meredith Holzer of Burlington



Richard Loveless and Barry Whitworth of Burlington



Anthony and Libby, both of South Burlington

Photos by BEN SARLE, for BScene

more photos at
www.bscevent.com

Local Pipes Local People Local Products

Pipe Making Lessons
Pendant Making Lessons
Custom Pieces by...

- Jon K. Sun-Hon
- Moondog, Tues-Sat
- Tito, Sat (customs only)

Local Smoke Shop
Home of the Pipe Classic!

135 Main St.
Downtown Burlington
802-665-0994
10:30-7:30 Everyday

The Bern Gallery

Vermont Soup Company

PRIME RIB SPECIAL \$8.95

SATURDAY NIGHT
2 FILET MIGNON DINNERS FOR \$20
\$12.95 FOR ONE ALL THE TIME!

NEW LOWER PRICES!
FRIDAY NIGHT: 2 for 1 Fish & Chips

1636 WILLISTON ROAD, SO. BURLINGTON • 802-862-5678
Open 7 Days • Thur-Sat 7:30am-8pm, Sun-Wed 7:30am-3pm